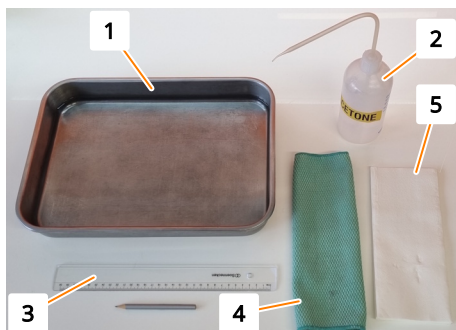
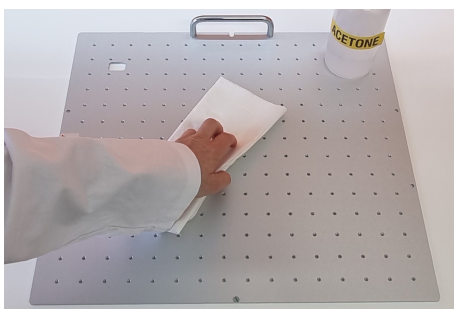


## Required Material



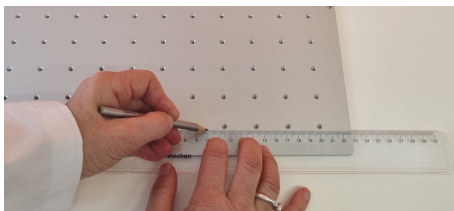
- 1 Bowl filled with water
- 2 Acetone
- 3 Ruler and lead pencil
- 4 Cloth
- 5 Soft, lint-free tissue

## Applying Sticky Stuff

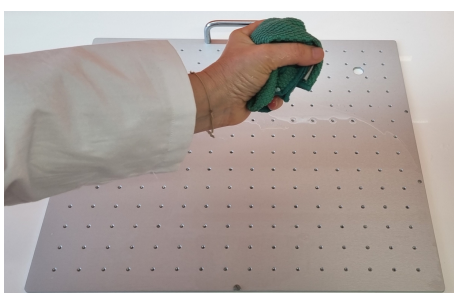


1. → Clean the tray thoroughly with acetone, do not touch it with bare hands afterwards.

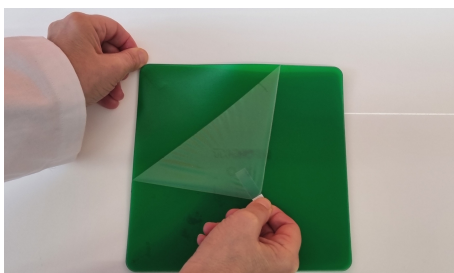
**Do not use any degreasing agent other than acetone.**



2. → Mark the position of the adhesive matting on the tray with the lead pencil. Pay attention not to touch the surface of the tray with your bare hands.



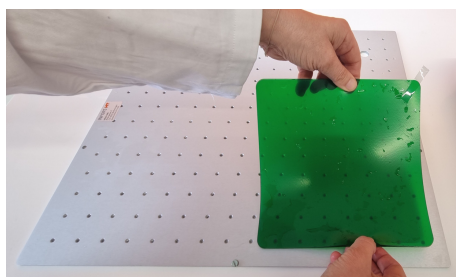
3. → Wet the tray lavishly with water.



4. → The adhesive matting is protected on both sides by a transparent protective film. Remove one of the two protective films (it does not matter which one).

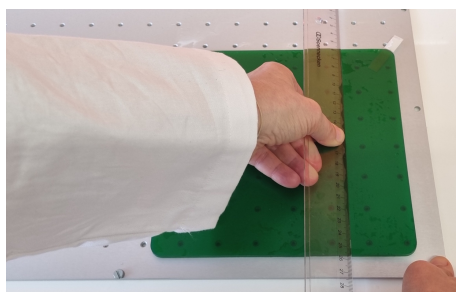


- 5.** ➤ Dip the adhesive matting completely into the bowl of water.



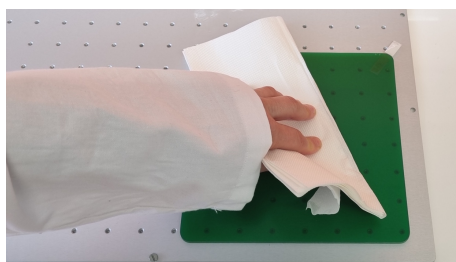
- 6.** ➤ Apply the adhesive matting to the tray while still dripping wet. If there are cut-outs on the tray for fixing the tray, cover them. Do not cut out the adhesive matting under any circumstances.

The adhesive matting can now be moved easily and positioned correctly. If it already sticks on the surface, additionally wet the tray with water.



- 7.** ➤ Gently run the ruler over the adhesive matting to remove the superfluous water and any air bubbles.

Wipe up the excess water with the cloth.



- 8.** ➤ Press down the adhesive matting with the tissue and dry it off.



- 9.** ➤ **Before use, allow the tray to rest for 24 hours to allow the adhesive properties to fully develop!**

- 10.** ➤ After the resting phase, remove the second protective film.

➡ The tray with the adhesive matting is now ready for use.

## Reusing Sticky Stuff

The adhesive matting is reusable. Proceed as follows to move it or to use it on a different tray:

- 1.** ➤ Wet the tray with water.
- 2.** ➤ Slowly pull off the adhesive matting at a very flat angle.
- 3.** ➤ Place the matting into a bowl with water and let it rest for about one hour to let it return to its original shape.
- 4.** ➤ Afterwards, the adhesive matting can be reapplied as described above.